

WP3B – Adaptive capacity and flexibility within reindeer husbandry in Nordland

Camilla Risvoll, Nordlandsforskning/Nordland Research Institute

Main objective:

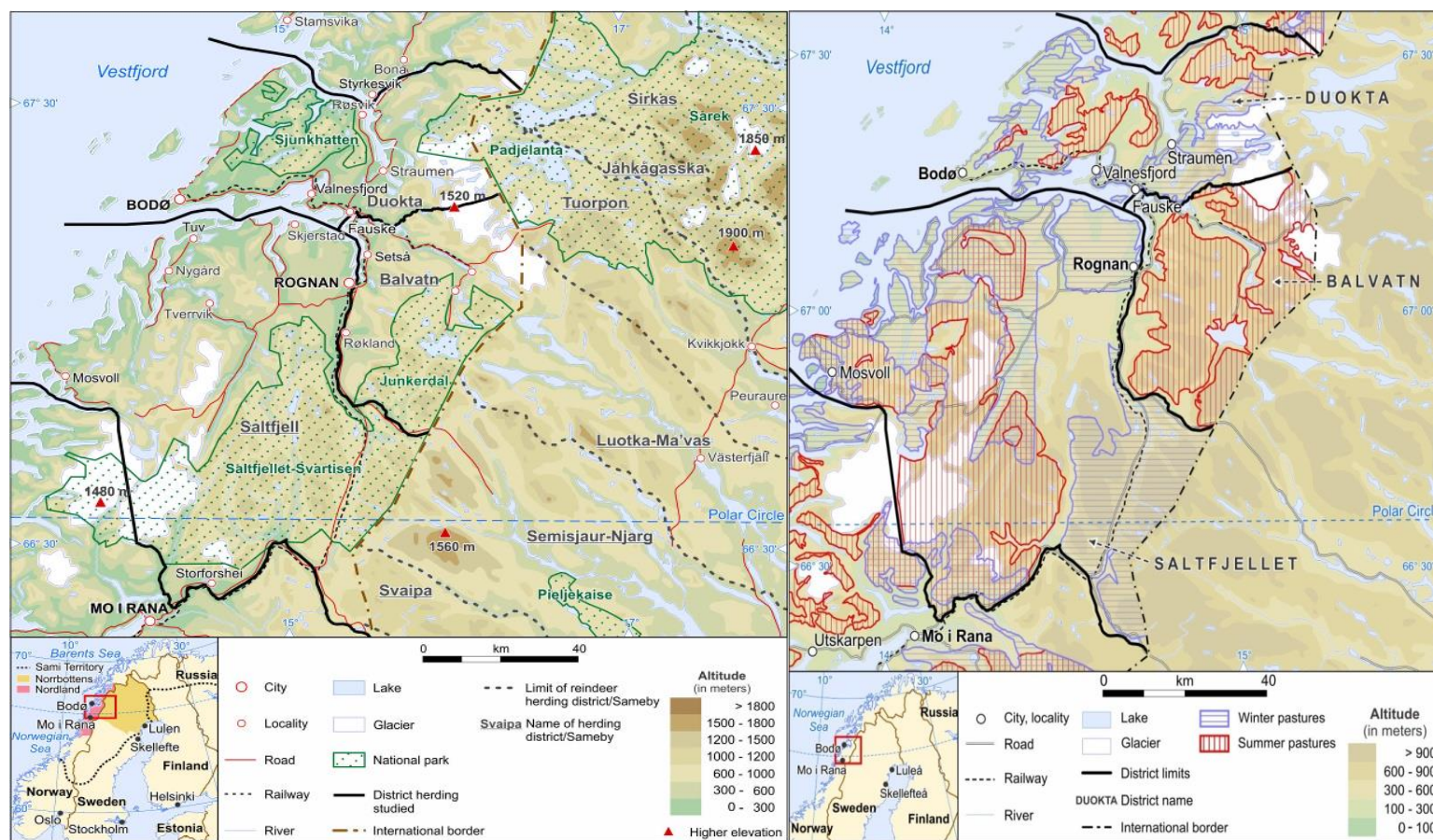
- Explore adaptive capacity within reindeer husbandry:
 - The herding districts' adaptive space: how can this be increased?



Study area: Salten, Nordland – Northern Norway



Reindeer herding districts, Salten



Different knowledge systems and trust

- Local/experience based knowledge vs scientific knowledge
 - Need for coproduction of knowledge
- Recruitment
- Creates uncertainty for their future

Participatory mapping

- Workshop:
 - Invite herders from two herding districts in Salten, Nordland: Duokta and Ildgruben herding districts
 - Invite herders from Wilhelmina to share experience on using this tool
- Aim: map cumulative effects that impact upon the adaptive space within herding – visualize land use and land loss/loss of access to pastures

Policy instruments

- Identify existing policy instruments in place for reducing conflict
 - Methods for registering carnivore family groups is perceived as both difficult and lacking sense
 - Explore alternatives to these

Methods

- Workshop
- Document study
- Interviews



Thank you!



Photo: C.Risvoll