

From Free Grazing to Flock Management in Switzerland

Best Practise – Challenges - Limits

austauschen
verstehen
weiterkommen



Daniel Mettler,
Swiss Agricultural Consulting Agency



ENTWICKLUNG DER LANDWIRTSCHAFT UND DES LÄNDLICHEN RAUMS
DÉVELOPPEMENT DE L'AGRICULTURE ET DE L'ESPACE RURAL
SVILUPPO DELL'AGRICOLTURA E DELLE AREE RURALI
DEVELOPING AGRICULTURE AND RURAL AREAS

Overview

- Sheep grazing and alpine pastures
- Flock management on three alpine levels
- Strategy and implementation to protect the flocks
- Efficiency of the protection measures
- Best Practise: 2 cases of alpine farms

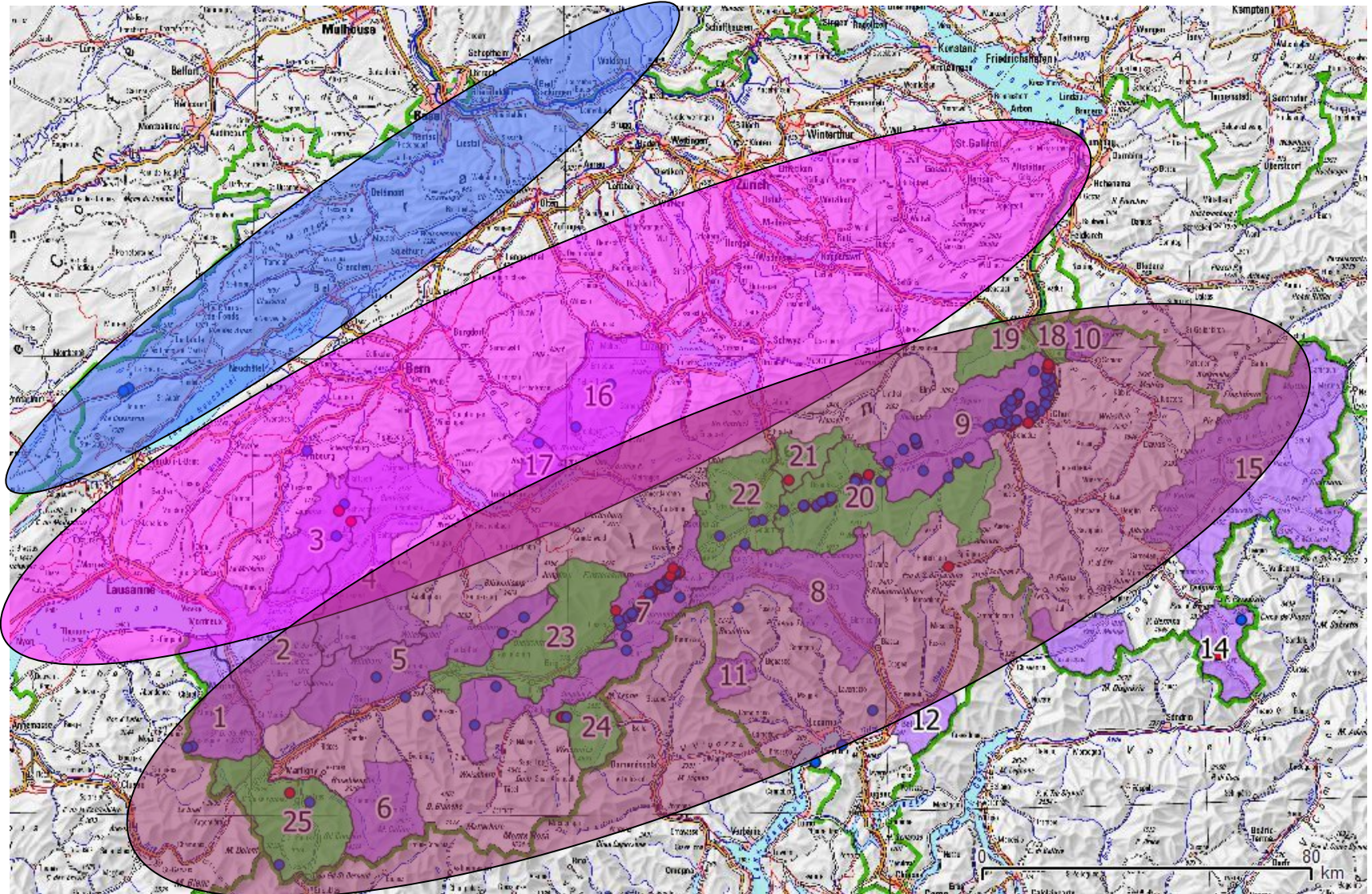
Swiss sheep and goat farming

- **400'000 sheep, 90'000 goats**
- small farms (20-50 sheep)
- high rate of non-professional farms
- «Landscape-gardening» and «special products»
- Cultural differences between cattle and sheep
- Different interests between breeders and producers
- Differences between milk and beef production
- Difficulties with Marketing and image of «small cattle»
- «Goats are trendy»

Summer grazing on alpine pastures

- 380'000 cattle (milking cows, young cattle)
- ***200'000 sheep***
- ***30'000 goats***
- 7000 alpine farms with summer grazing
- 15'000 workers during 4 month
- 537'000 ha of grazing land
- **Properties: Communities, Corporations, Private**
- Subsidies 170 Millionen SFr., 1 Million «sheep protection»

Pastures: jurassic – prealpine - alpine



Jurassic forest pastures



Prealpine regions: mosaic of pastures



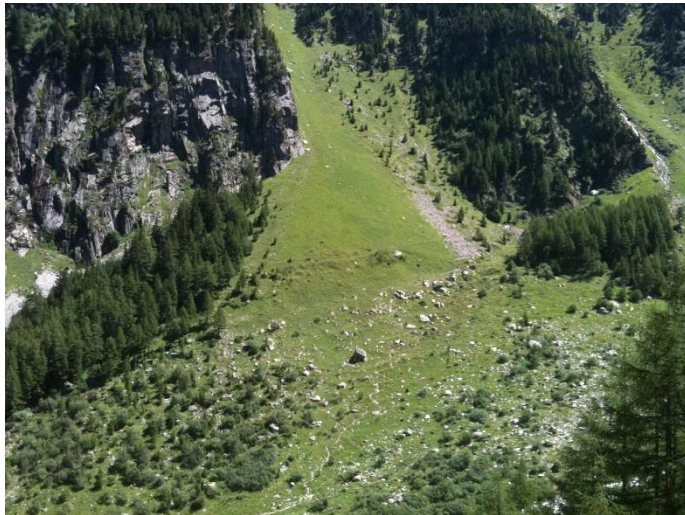
Flock management by rotation grazing



«Inside» alpine pasture: from rotation to herding



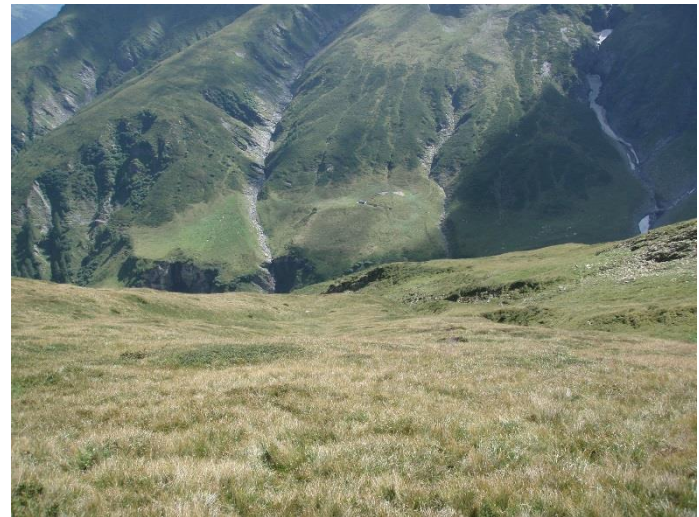
From forest to bushes and shrubs



Upper alpine pastures: rocky and pionier grazing



Shrubs and limits of vegetation: shepherding



Monitoring of wolves and lynx and protection measures

Situation 1: single transient wolves

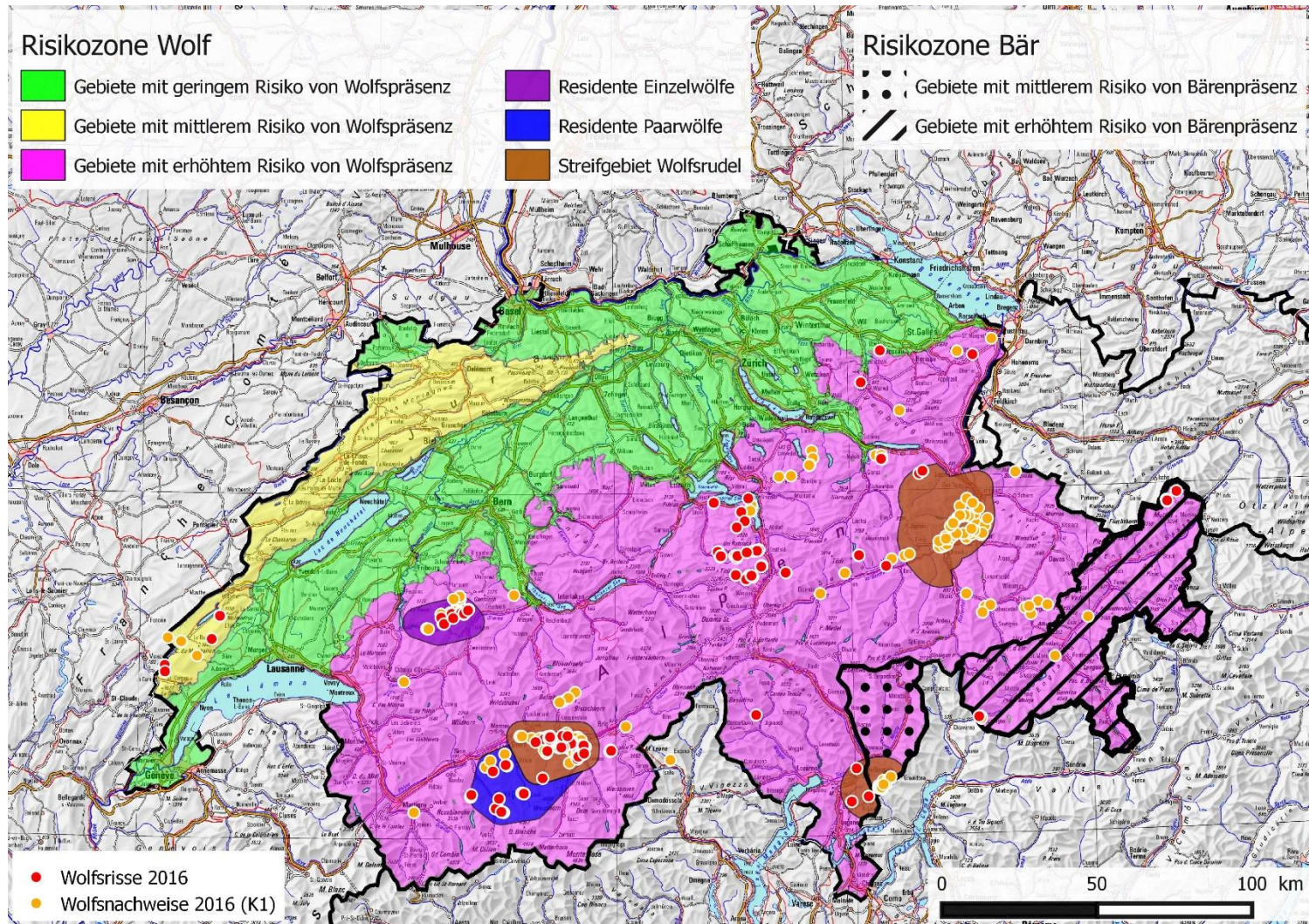
Situation 2: single resident wolves

Situation 3: couple of wolves

Situation 4: pack of wolves

Situation 5: hot-spots of lynx

Risk management and zones of predation



Subsidies and legal baseline (JSV Art 10ter)

Protection of the flocks

Farming measures

Specific measures

With subsidies

Flock management

LGD's, fences

Without subsidies

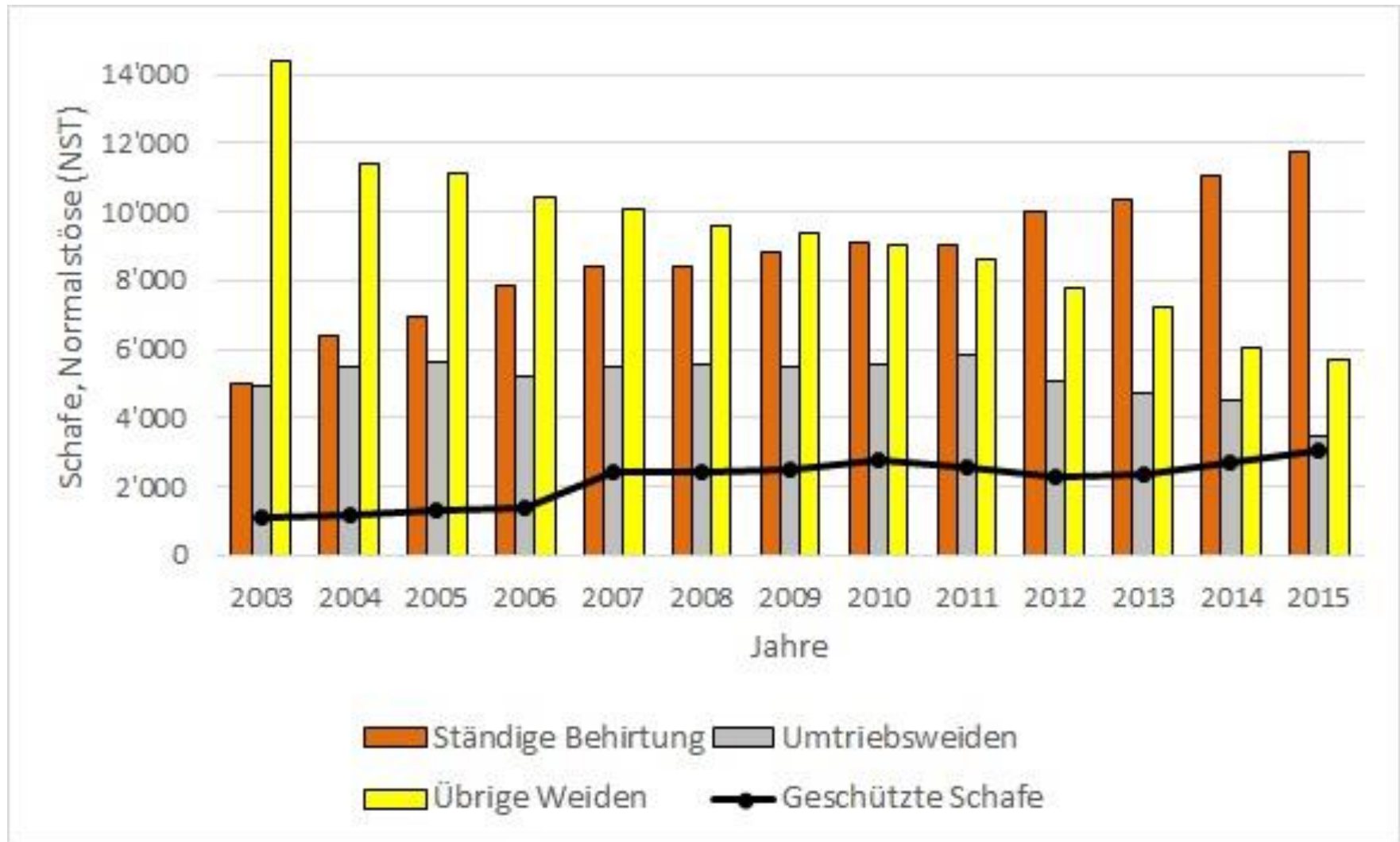
Stable, structural changes

Donkeys and lamas

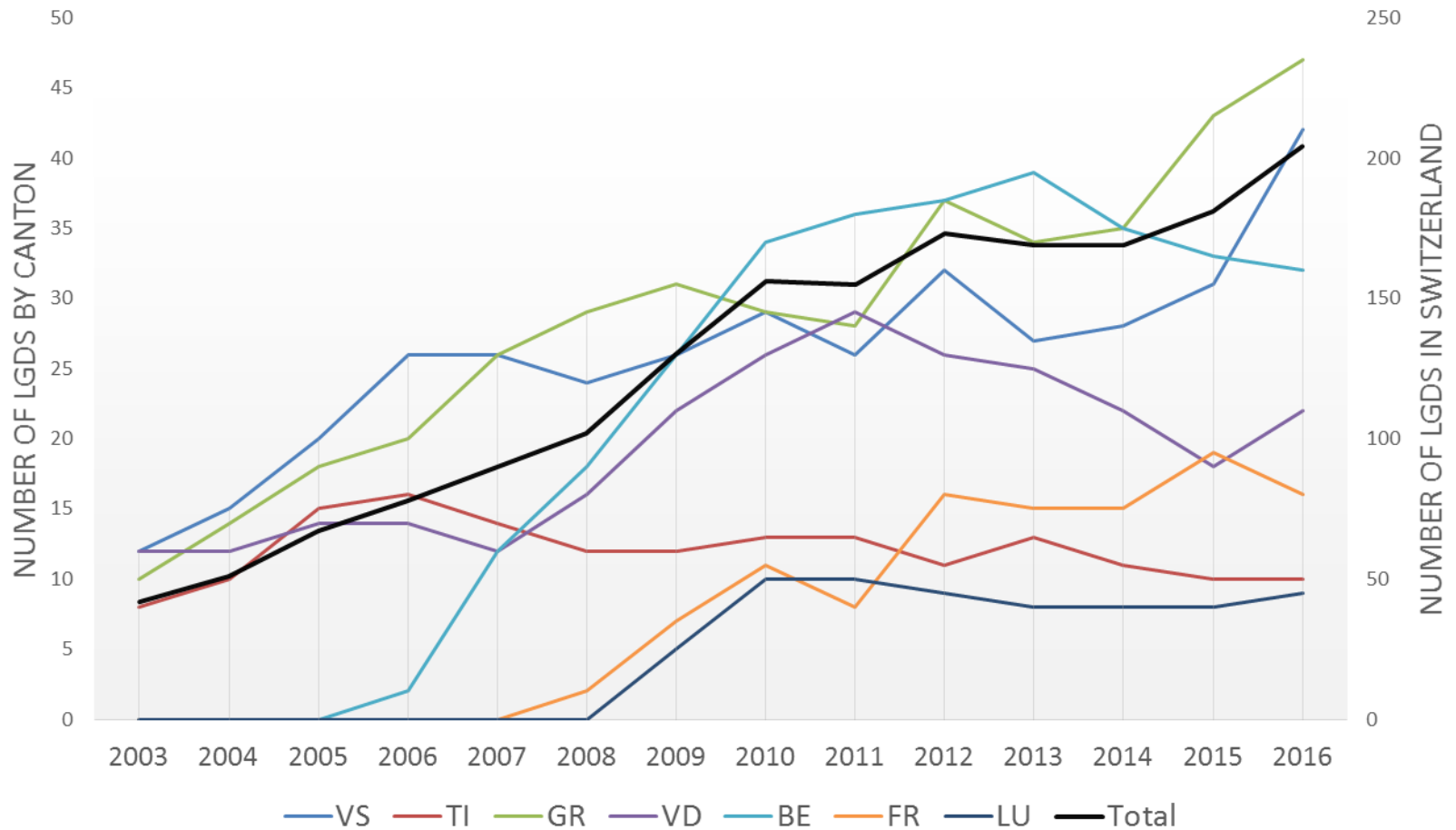
Consulting support

National consulting system, LGD's breeding programm

Evolution of 3 types of sheep grazing



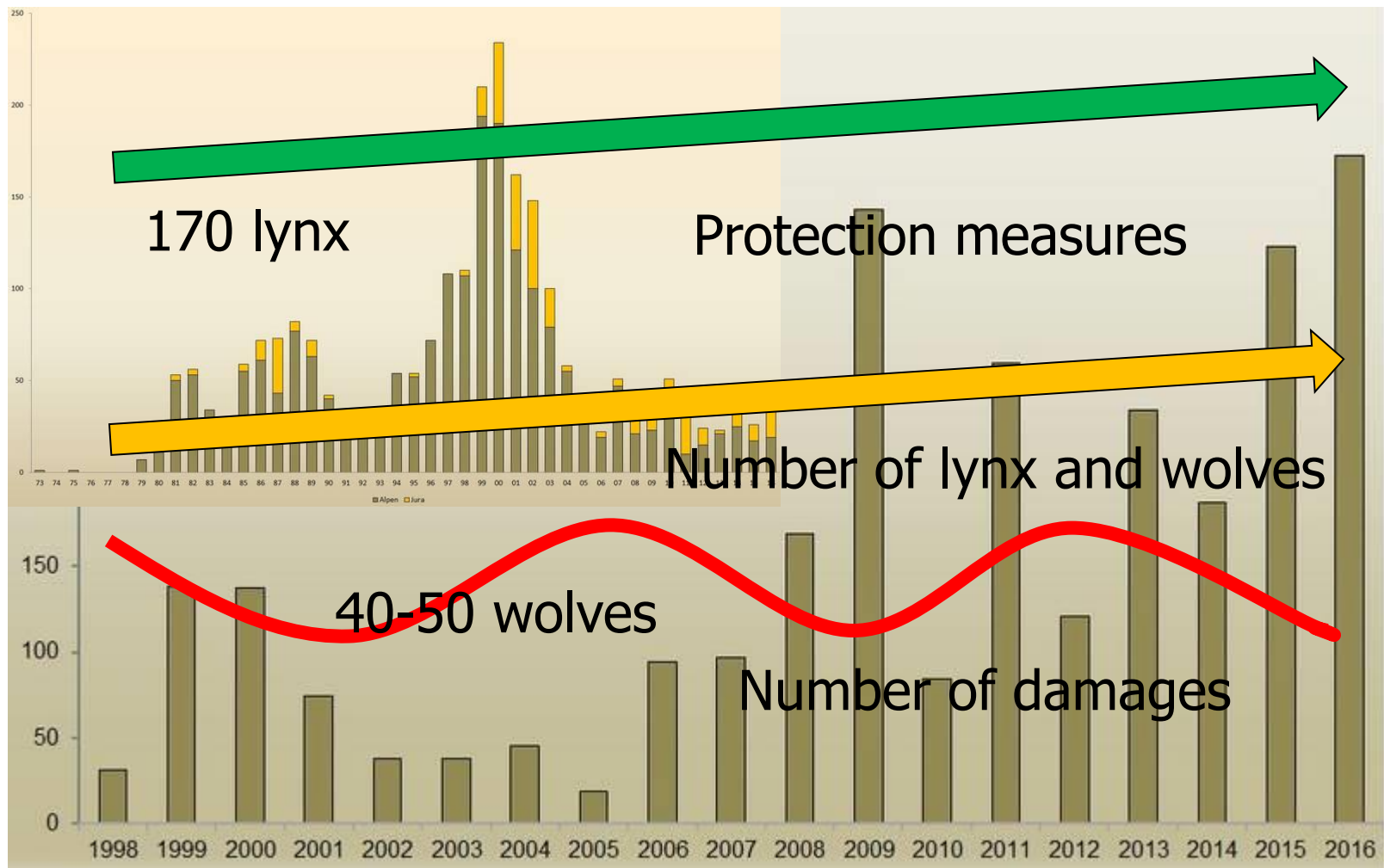
Evolution of LGD's on alpine pastures 2003 - 2016



Catalogue of measures for the Protection of the flocks

- 250 shepherds (summer 220, winter 30)
- 250 LGD's for alpine pastures
- Electrical fencing and reinforcement (20-30 farms per year)
- Foxlights and Alarm Guards
- Structural changes and farm change-management
- *Subsidies-System (Quality and Efficiency Control)*
- *Consulting System: LGD' training, shepherd training, farm consulting and national coordination*

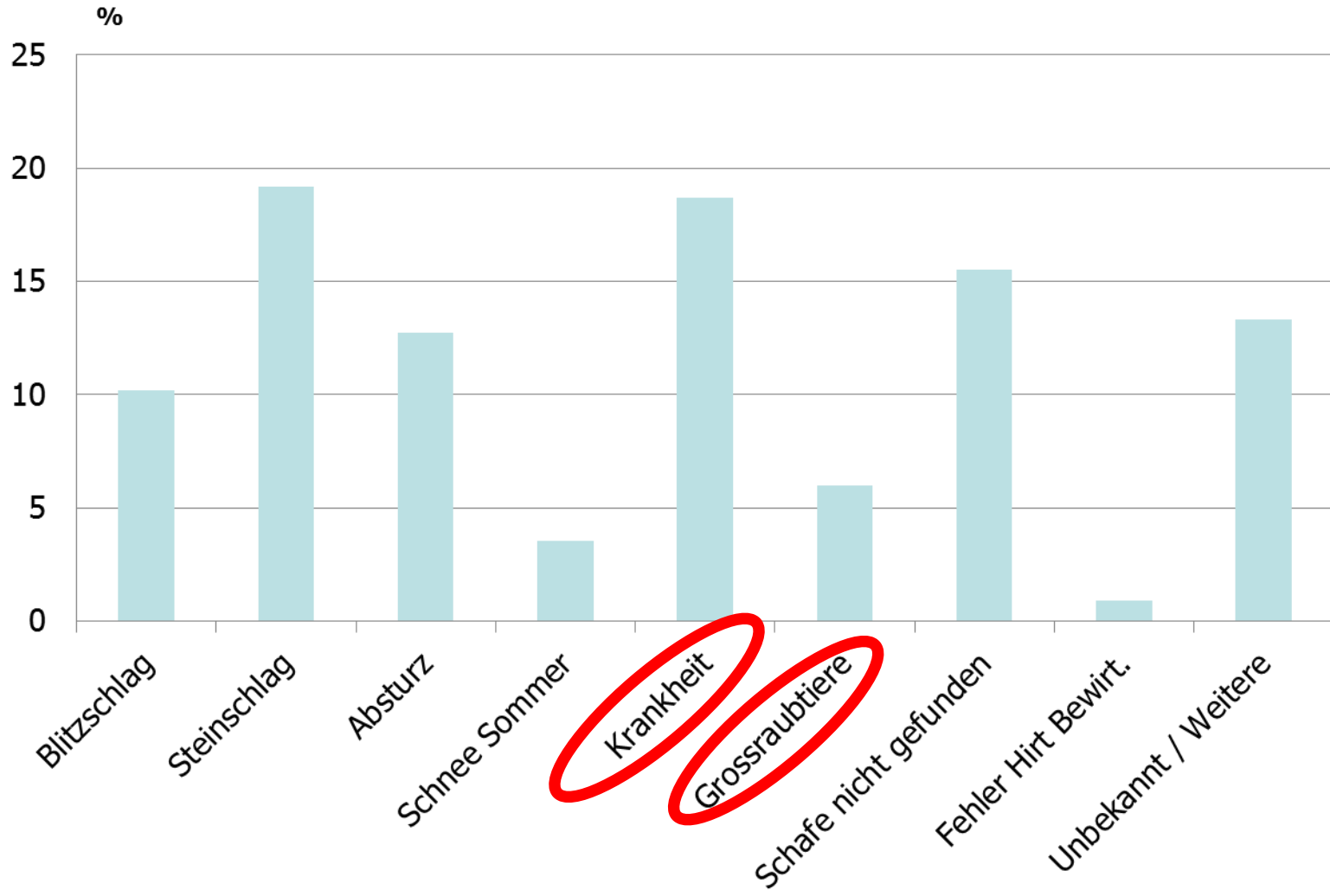
Damages and efficiency of measures



Mortality on summer grazing 2011

<i>Grazing system</i>	<i>Number of sheep</i>	<i>Mortality</i>	<i>Number of losses</i>
Shepherding	81'563	1.96	1599
Rotation grazing	52'490	1.77	929
Free Grazing	74'921	2.26	1693
Total	208'974	2.02	4221

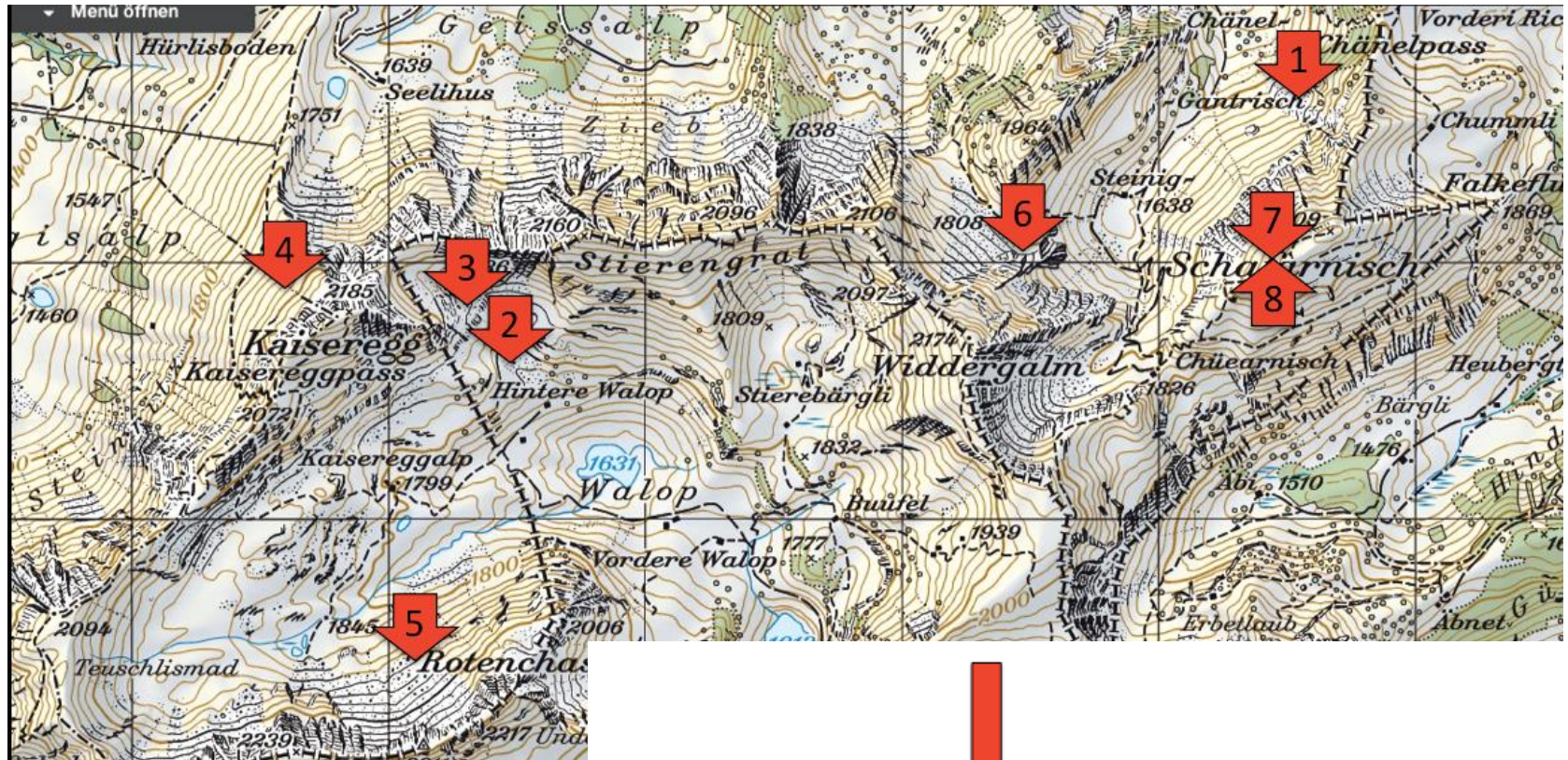
Causes of Mortality 2011



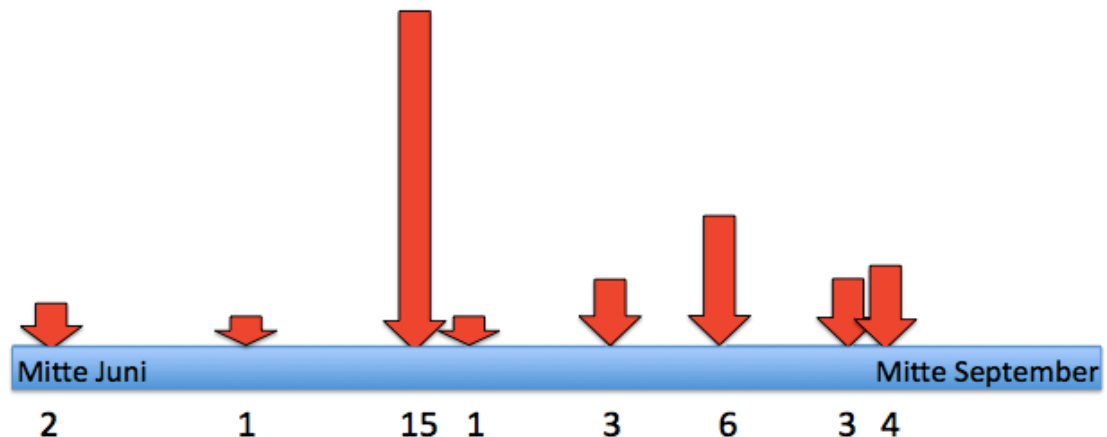
Efficiency of eletrical fencing and wolf behaviour



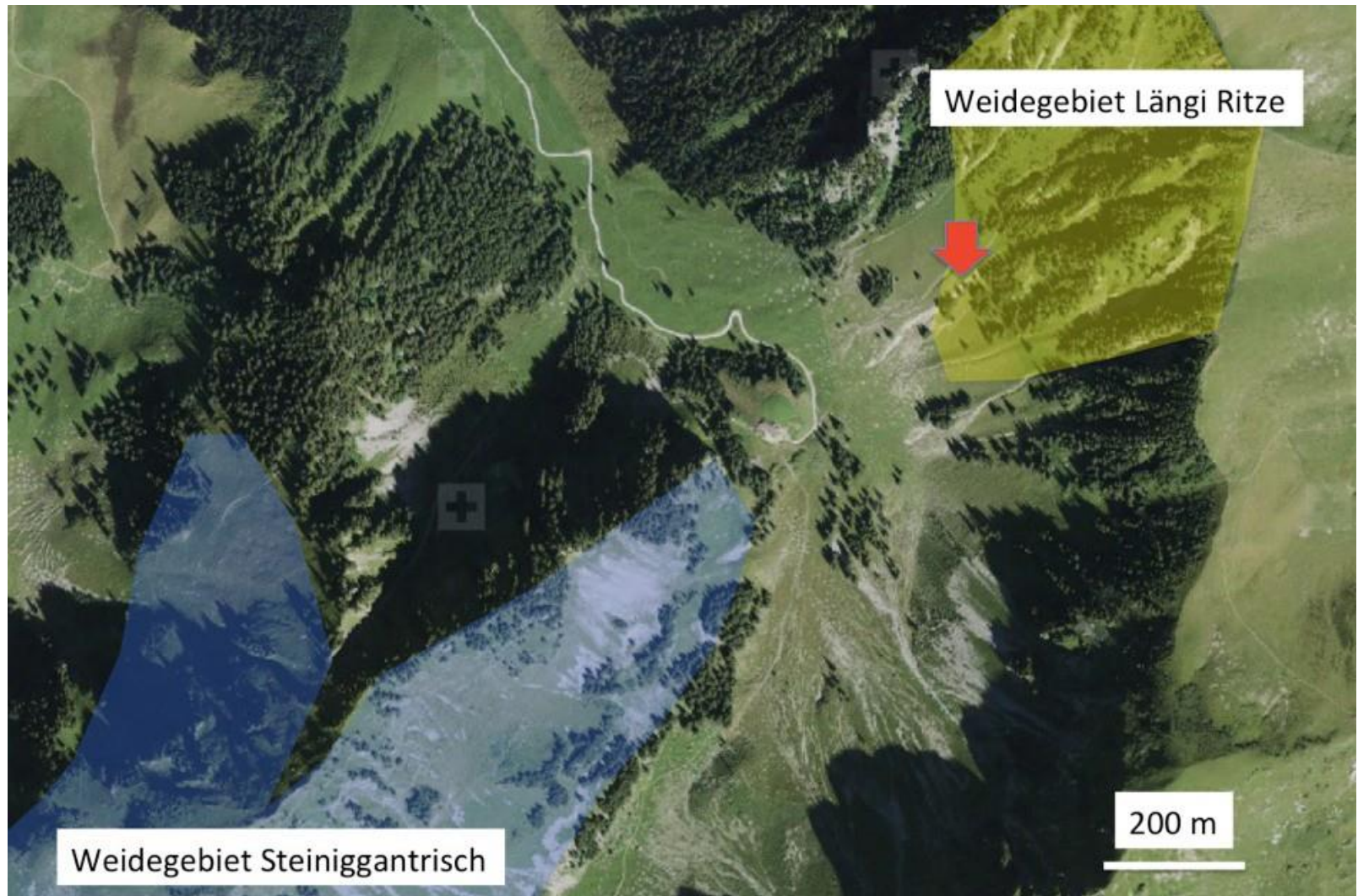
Overview of wolf attacks at „Kaiseregg“ 2016



1600 sheep
 Free overnight
 1 professional shepherd with help
 3 LGD's



First attack: 15th of June



Questions and answers

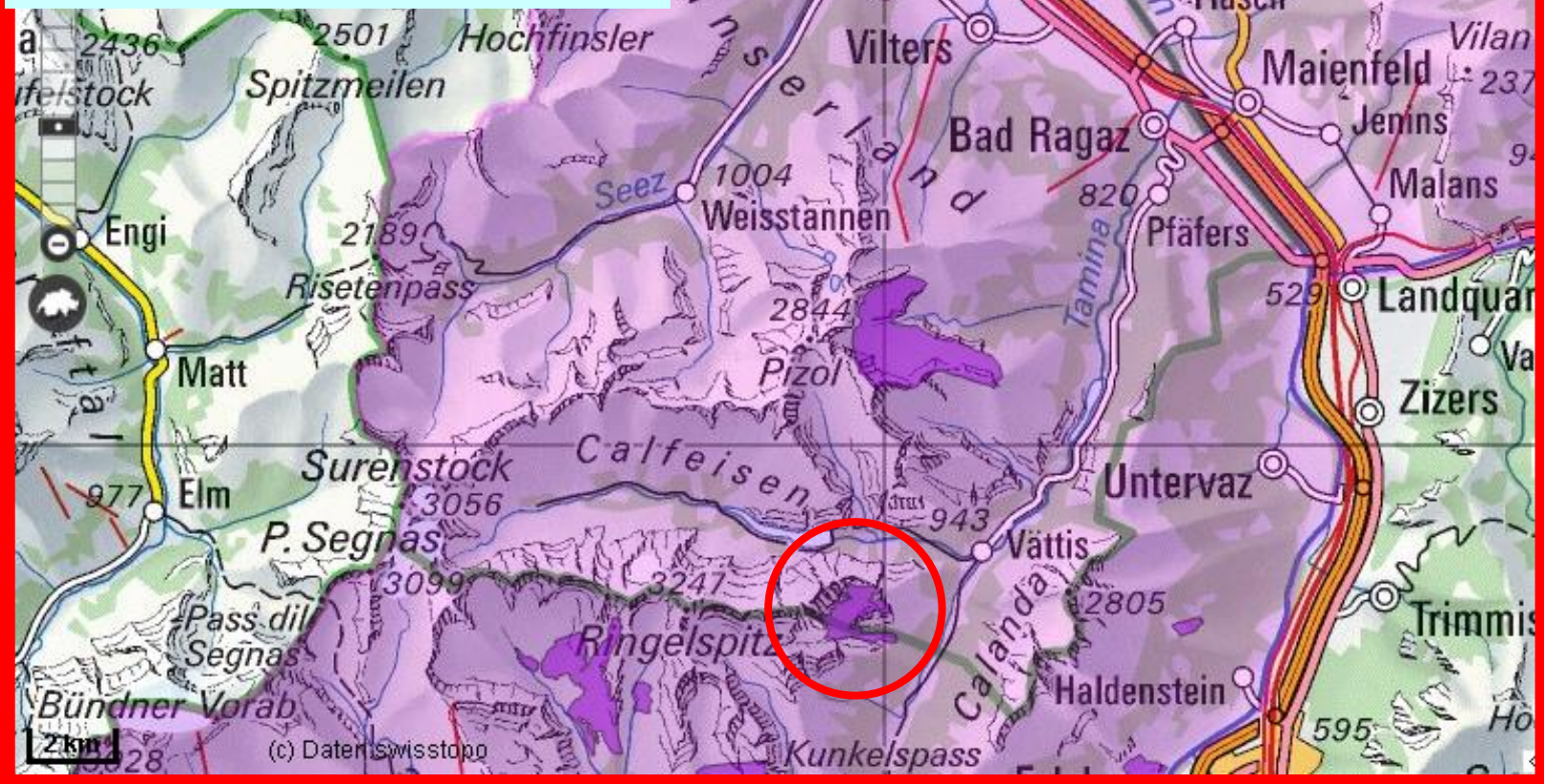
- Number, age and quality of LGD's
- Night-fencing, night corrals
- Night grazing
- Topography, weather and vegetation
- Size and distribution, composition of the flock
- Shepherd and heading dogs
- Type of fences, eletrical tension
- Other factors

Schafalpalp Ramoz 2011 - 2013

2011: Free grazing

2012: rotation grazing

2013: shepherding



Questions and answers

- Number, age and quality of LGD's
- Night-fencing, night corrals
- Night grazing
- Topography, weather and vegetation
- Size and distribution, composition of the flock
- Shepherd and heading dogs
- Type of fences, eletrical tension
- Other factors

Protection of the flocks: Change management between wildlife and livestock



Danke für Ihre Aufmerksamkeit

Für weitere Auskünfte besuchen Sie unsere Website

www.agridea.ch oder www.herdenschutzschweiz.ch oder schicken Sie uns ein E-Mail an info@agridea.ch

